

## A) Fixed Lateral:



Includes fixed lateral hardware. Left and Right lateral are independent and different types and sizes can be selected for each side. Lateral pads use 3DX covers with 1/2" Sunmate foam in the core. Laterals can move up & down, for adjustments on spine.



Left Side		
JFTLAT4X4FL	E0956	Left-LATERAL FIXED 4Lx4H
JFTLAT4X5FL	E0956	Left-LATERAL FIXED 4Lx5H
JFTLAT4X6FL	E0956	Left-LATERAL FIXED 4Lx6H
JFTLAT6X4FL	E0956	Left-LATERAL FIXED 6Lx4H
JFTLAT6X5FL	E0956	Left-LATERAL FIXED 6Lx5H
JFTLAT6X6FL	E0956	Left-LATERAL FIXED 6Lx6H

Right Side		
JFTLAT4X4FR	E0956	Right-LATERAL FIXED 4Lx4H
JFTLAT4X5FR	E0956	Right-LATERAL FIXED 4Lx5H
JFTLAT4X6FR	E0956	Right-LATERAL FIXED 4Lx6H
JFTLAT6X4FR	E0956	Right-LATERAL FIXED 6Lx4H
JFTLAT6X5FR	E0956	Right-LATERAL FIXED 6Lx5H
JFTLAT6X6FR	E0956	Right-LATERAL FIXED 6Lx6H

## B) Fixed Lateral with Inset:

Includes fixed lateral hardware.  
 Left and Right lateral are independent and different types and sizes can be selected for each side. Laterals pads use 3DX covers with 1/2" Sunmate foam in the core. Laterals can move up & down, inset & outset for adjustments on spine.



Left Side		
JFTLAT4X4FL1I	E0956	Left-LATERAL FIXED 1"Inset 4Lx4H
JFTLAT4X5FL1I	E0956	Left-LATERAL FIXED 1"Inset 4Lx5H
JFTLAT4X6FL1I	E0956	Left-LATERAL FIXED 1"Inset 4Lx6H
JFTLAT6X4FL1I	E0956	Left-LATERAL FIXED 1"Inset 6Lx4H
JFTLAT6X5FL1I	E0956	Left-LATERAL FIXED 1"Inset 6Lx5H
JFTLAT6X6FL1I	E0956	Left-LATERAL FIXED 1"Inset 6Lx6H

Right Side		
JFTLAT4X4FR1I	E0956	Right-LATERAL FIXED 1"Inset 4Lx4H
JFTLAT4X5FR1I	E0956	Right-LATERAL FIXED 1"Inset 4Lx5H
JFTLAT4X6FR1I	E0956	Right-LATERAL FIXED 1"Inset 4Lx6H
JFTLAT6X4FR1I	E0956	Right-LATERAL FIXED 1"Inset 6Lx4H
JFTLAT6X5FR1I	E0956	Right-LATERAL FIXED 1"Inset 6Lx5H
JFTLAT6X6FR1I	E0956	Right-LATERAL FIXED 1"Inset 6Lx6H

## C) Swing away Lateral:



Includes swing away mounting hardware. Left and Right lateral are independent and different types and sizes can be selected for each side. Lateral pads use 3DX covers with 1/2" Sunmate foam in the core. Laterals can move up & down, inset & outset for adjustments on spine.

Right Side		
<b>JFTLAT4X4SAR</b>		<b>LAT 4L X 4H W/ S/A MOUNT</b>
JFTLAT4X4	E0956	LATERAL 4L X 4H
JFTSAMNT	E1028	LATERAL SWING AWAY MOUNT
<b>JFTLAT4X5SAR</b>		<b>LAT 4L X 5H W/ S/A MOUNT</b>
JFTLAT4X5	E0956	LATERAL 4L X 5H
JFTSAMNT	E1028	LATERAL SWING AWAY MOUNT
<b>JFTLAT4X6SAR</b>		<b>LAT 4L X 6H W/ S/A MOUNT</b>
JFTLAT4X6	E0956	LATERAL 4L X 6H
JFTSAMNT	E1028	LATERAL SWING AWAY MOUNT
<b>JFTLAT6X4SAR</b>		<b>LAT 6L X 4H W/ S/A MOUNT</b>
JFTLAT6X4	E0956	LATERAL 6L X 4H
JFTSAMNT	E1028	LATERAL SWING AWAY MOUNT
<b>JFTLAT6X5SAR</b>		<b>LAT 6L X 5H W/ S/A MOUNT</b>
JFTLAT6X5	E0956	LATERAL 6L X 5H
JFTSAMNT	E1028	LATERAL SWING AWAY MOUNT
<b>JFTLAT6X6SAR</b>		<b>LAT 6L X 6H W/ S/A MOUNT</b>
JFTLAT6X6	E0956	LATERAL 6L X 6H
JFTSAMNT	E1028	LATERAL SWING AWAY MOUNT

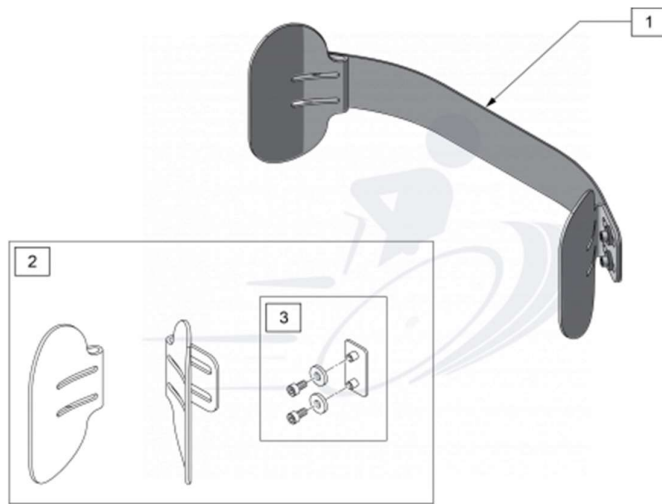


Left Side		
<b>JFTLAT4X4SAL</b>		<b>LAT 4L X 4H W/ S/A MOUNT</b>
JFTLAT4X4	E0956	LATERAL 4L X 4H
JFTSAMNT	E1028	LATERAL SWING AWAY MOUNT
<b>JFTLAT4X5SAL</b>		<b>LAT 4L X 5H W/ S/A MOUNT</b>
JFTLAT4X5	E0956	LATERAL 4L X 5H
JFTSAMNT	E1028	LATERAL SWING AWAY MOUNT
<b>JFTLAT4X6SAL</b>		<b>LAT 4L X 6H W/ S/A MOUNT</b>
JFTLAT4X6	E0956	LATERAL 4L X 6H
JFTSAMNT	E1028	LATERAL SWING AWAY MOUNT
<b>JFTLAT6X4SAL</b>		<b>LAT 6L X 4H W/ S/A MOUNT</b>
JFTLAT6X4	E0956	LATERAL 6L X 4H
JFTSAMNT	E1028	LATERAL SWING AWAY MOUNT
<b>JFTLAT6X5SAL</b>		<b>LAT 6L X 5H W/ S/A MOUNT</b>
JFTLAT6X5	E0956	LATERAL 6L X 5H
JFTSAMNT	E1028	LATERAL SWING AWAY MOUNT
<b>JFTLAT6X6SAL</b>		<b>LAT 6L X 6H W/ S/A MOUNT</b>
JFTLAT6X6	E0956	LATERAL 6L X 6H
JFTSAMNT	E1028	LATERAL SWING AWAY MOUNT

## D) Cradle U:



Designed for clients with postural or spinal deviations - including wider trunks and narrow hips, narrow trunks and wider hips, or curvatures - the NEW Cradle-U Lateral reshapes the existing contour of the off-the-shelf J3 back to match the client. The Cradle-U adjusts the contour by attaching directly to the J3 back shell beneath the foam, while the support plates adjust in angle to match the user's torso. The Cradle-U's intuitive design provides seamless support that minimizes interference with propulsion.



Pos.	Part #	Description	Remarks
1	CRADLEU16	CRADLE U ASSEMBLY 16 WIDE	complete kit
1	CRADLEU18	CRADLE U ASSEMBLY 18 WIDE	complete kit
1	CRADLEU20	CRADLE U ASSEMBLY 20 WIDE	complete kit
2	126254	CRADLE U PADDLES W/HDWR PAIR	set of pads w/hardware 2 sides
3	126255	CRADLE U HARDWARE PAIR	set of hardware 2 sides